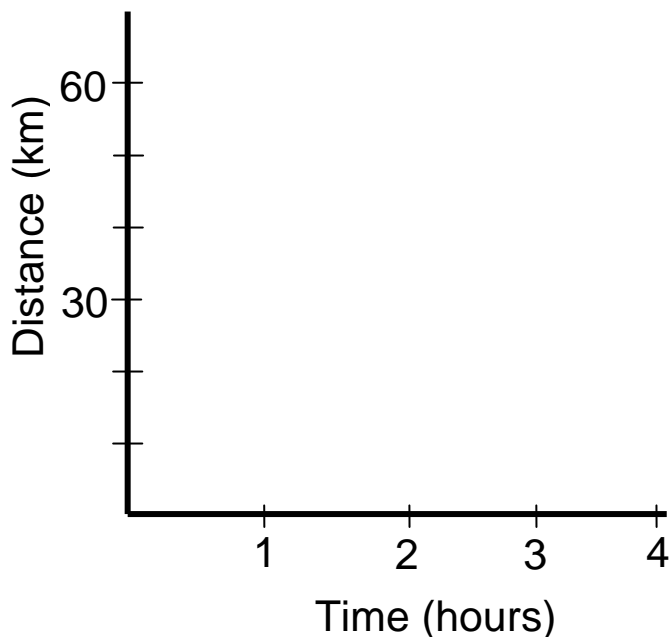


A sight-seeing bus travels around a city in 4 hours. The bus travels 15 km in the first hour. During the second hour, the bus stops to allow passengers to explore the science museum. The bus then travels 30 km in the third hour and arrives at a drive-through animal park. It takes the bus 1 hour to travel the 5 km road through the park.



Draw a line graph that represents the bus's motion during the 4-hour period.



Reporting Category 2: Force, Motion, and Energy

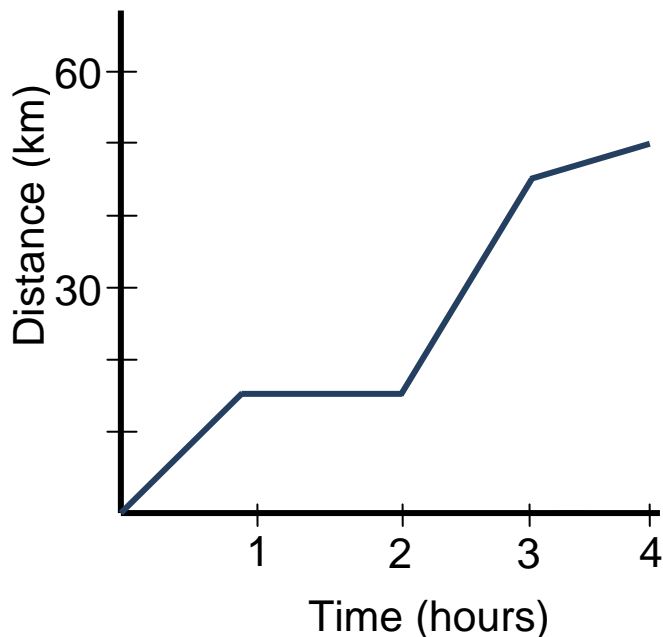
TEKS

6.8D: The student is expected to measure and graph changes in motion.

6.2D: The student is expected to construct tables and graphs, using repeated trials and means, to organize data and identify patterns.

Answer

Science Sightseeing Bus Trip



Teacher Notes

Students should include a title for their graph. During the second hour, the line is horizontal since the bus is not moving. During the third hour, the line is the steepest since the bus has the greatest speed. The last hour's portion of the line should have the least steep line since the bus has the slowest speed during this time.